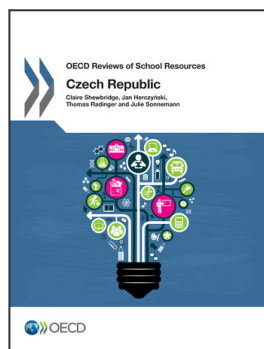


Acronyms and abbreviations

CBR	Country Background Report
CERMAT	<i>Centrum pro zjišťování výsledků vzdělávání</i> – Centre for the Evaluation of Educational Achievement
ČŠI	<i>Česká školní inspekce</i> – Czech School Inspectorate
CSR	EU Country Specific Recommendations
EC	European Commission
ESCS	Economic, Social and Cultural Status
EU	European Union
FEP	Framework Education Programme
FTE	Full Time Equivalent
GDP	Gross Domestic Product
ICT	Information and Communication Technologies
ISCED	International Standard Classification of Education
KZÚV	<i>Krajská zařízení ústavní výchovy</i> – Regional Institutional Care Facilities
MŠMT	<i>Ministerstvo školství, mládeže a tělovýchovy</i> – Ministry of Education, Youth and Sports
NIDV	<i>Národní institut pro další vzdělávání</i> – National Institute for Further Education
NUTS	Nomenclature of Territorial Units for Statistics
NÚV	<i>Národní ústav pro vzdělávání</i> – National Institute of Education
OECD	Organisation for Economic Co-operation and Development
ONIV	Other Non-Investment Expenditures
PISA	OECD Programme for International Student Assessment
PPP	Purchasing Power Parities
SEN	Special Educational Needs
School	
Registry	School Registry of Schools and School Facilities
SDP	School Strategic Development Plan
SEP	School Educational Programme
SOŠ	<i>Střední odborné školy</i> – Secondary Technical Schools
SoU	<i>Střední odborné učiliště</i> – Secondary Vocational Schools
Strategy	
2020	Strategy for Education Policy of the Czech Republic until 2020
TALIS	OECD Teaching and Learning International Survey
UNDP	United Nations Development Programme
VET	Vocational Education and Training

The names of the fourteen Czech regions are presented in English in this report, as follows:

NUTS 2 grouping	Czech region (English)	Czech region (Czech)
Prague	Prague	<i>Hlavní Město Praha</i>
Central Bohemia	Central Bohemian region	<i>Středočeský kraj</i>
Southwest	South Bohemian region	<i>Jihočeský kraj</i>
	Pilsen region	<i>Plzeňský kraj</i>
Northwest	Karlovy Vary region	<i>Karlovarský kraj</i>
	Ústí region	<i>Ústecký kraj</i>
Northeast	Liberec region	<i>Liberecký kraj</i>
	Hradec Kralove region	<i>Královéhradecký kraj</i>
	Pardubice region	<i>Pardubický kraj</i>
Southeast	Vysocina region	<i>Kraj Vysočina</i>
	South Moravian region	<i>Jihomoravský kraj</i>
Central Moravia	Olomouc region	<i>Olomoucký kraj</i>
	Zlín region	<i>Zlínský kraj</i>
Moravia-Silesia	Moravian-Silesian region	<i>Moravskoslezský kraj</i>



From:

OECD Reviews of School Resources: Czech Republic 2016

Access the complete publication at:

<https://doi.org/10.1787/9789264262379-en>

Please cite this chapter as:

Shewbridge, Claire, *et al.* (2016), "Acronyms and abbreviations", in *OECD Reviews of School Resources: Czech Republic 2016*, OECD Publishing, Paris.

DOI: <https://doi.org/10.1787/9789264262379-2-en>

This work is published under the responsibility of the Secretary-General of the OECD. The opinions expressed and arguments employed herein do not necessarily reflect the official views of OECD member countries.

This document and any map included herein are without prejudice to the status of or sovereignty over any territory, to the delimitation of international frontiers and boundaries and to the name of any territory, city or area.

You can copy, download or print OECD content for your own use, and you can include excerpts from OECD publications, databases and multimedia products in your own documents, presentations, blogs, websites and teaching materials, provided that suitable acknowledgment of OECD as source and copyright owner is given. All requests for public or commercial use and translation rights should be submitted to rights@oecd.org. Requests for permission to photocopy portions of this material for public or commercial use shall be addressed directly to the Copyright Clearance Center (CCC) at info@copyright.com or the Centre français d'exploitation du droit de copie (CFC) at contact@cfcopies.com.